



NuEra

Future Perfect

NuEra™ *tight*

The new era of intelligent
controlled heating

For skin tightening and cellulite

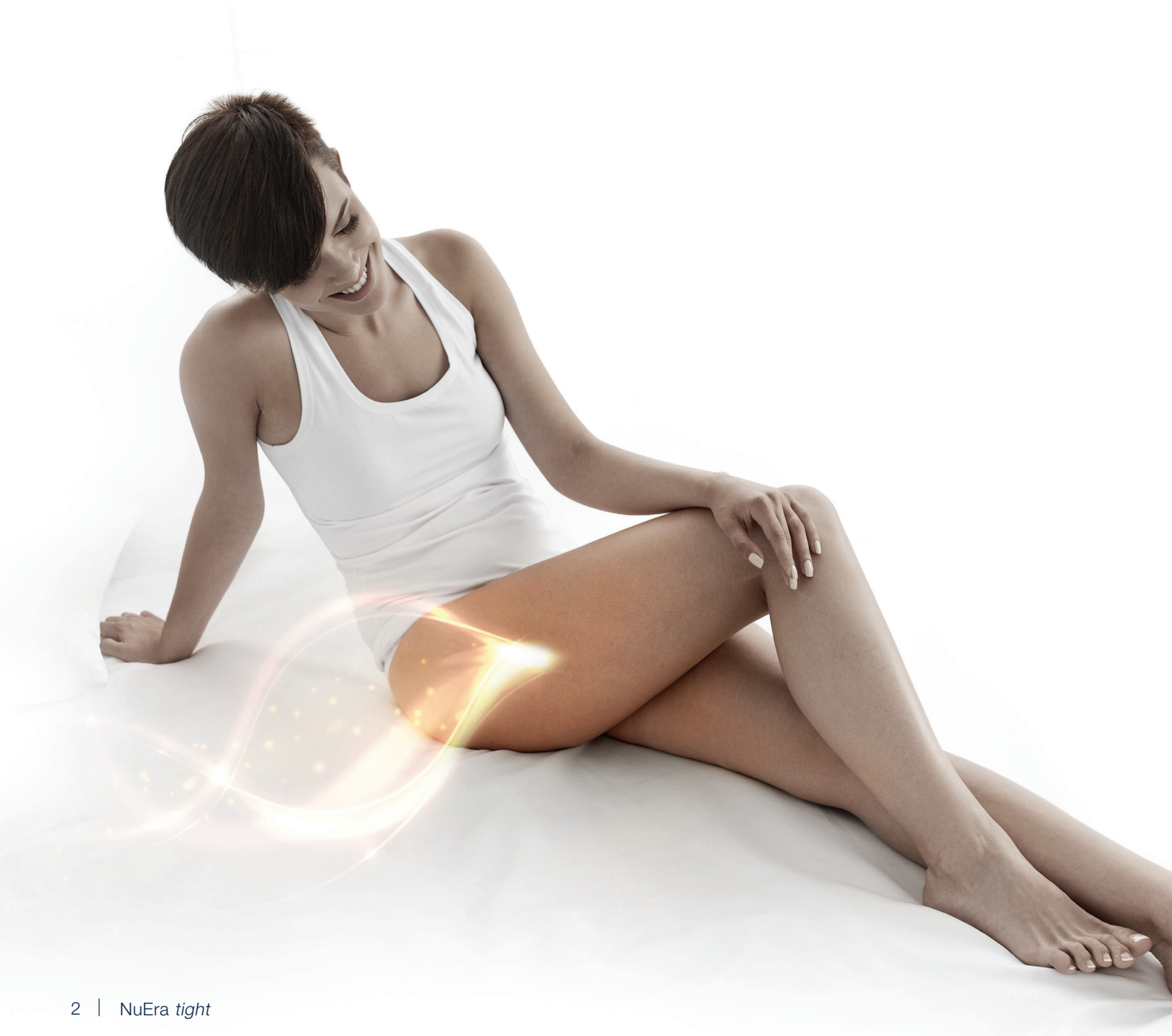


Towards Future Perfect

Every day is a new beginning and a new future. Every day is a new opportunity for people to step forward looking and feeling their best, from top to toe.

NuEra *tight* is a temperature-controlled radio frequency (RF) skin tightening system with the power to redefine the future. The power to target and revive. To uplift. And to perfect, all over.

NuEra *tight* is **Future Perfect.**



A new future for patients. And for you.

Welcome to a new era of fast, effective and versatile treatments for body and face: NuEra *tight*.

Introduced by Lumenis®, the pioneers in energy-based technologies with 50+ years of innovation, NuEra is part of the BioRevital RF MED device family with CE mark for RF heating, both superficial and deep, to treat a variety of conditions such as temporary reduction in the appearance of cellulite and collagen remodeling for skin laxity and tightening.

What NuEra *tight* means...

For patients:

- Natural looking results
- Pleasant sensation
- No downtime

For practitioners:

- Simplicity
- Treating a wide range of conditions
- Efficacy

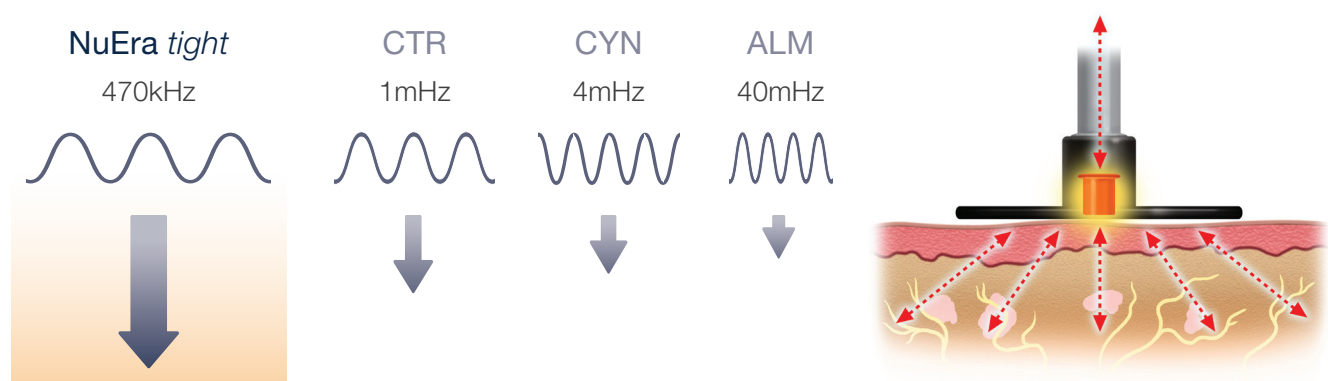
Start looking forward to a whole new future for your practice.

Depth and power perfect: Top-to-toe targeted skin tightening

NuEra *tight* is a non-invasive RF solution for tissue remodeling, firming loose skin, improving the appearance of cellulite and skin laxity, with consistent results and without downtime.

NuEra *tight* emits powerful RF waves at 470kHz with high 250W power, to heat the skin's surface superficially or reach deep tissue levels. By using the precise frequency and depth of heat, you can treat a variety of conditions with different levels of severity and on different areas of the body and face.

NuEra *tight* optimizes treatment efficacy on the abdomen, flanks, buttocks, inner and outer thighs, upper arms, bra and back fat, as well as around the eyes, mouth, cheeks and neck.



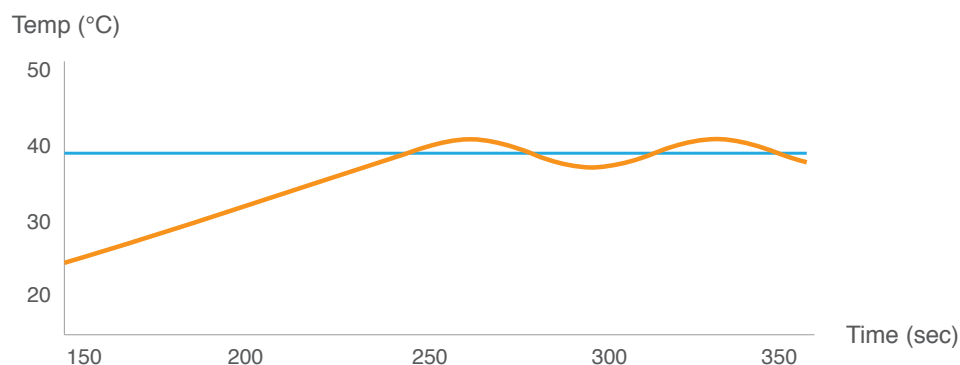
NuEra *tight* RF emits at a low 470kHz frequency to infiltrate deep down for deeper skin tissue penetration and better thermal effect and results.

Intelligent heat perfect: temperature-controlled RF

NuEra *tight* uses APIC (Automatic Power and Impedance Control), the next generation temperature control technology, to ensure safety and efficacy.

APIC automatically - and gradually - increases the RF power to the target temperature based on Impedance detection, and then maintains it for the duration of the treatment. It delivers precise heating to the required depth, with predictable and consistent results.

You can focus on treating your patients with the light and ergonomic handpiece, while letting the system take care of delivering the right temperature and power.



APIC monitors skin tissue temperature and impedance in real time. It automatically adjusts the RF power so that heat can penetrate deeper and more uniformly - and as needed for each specific treatment.

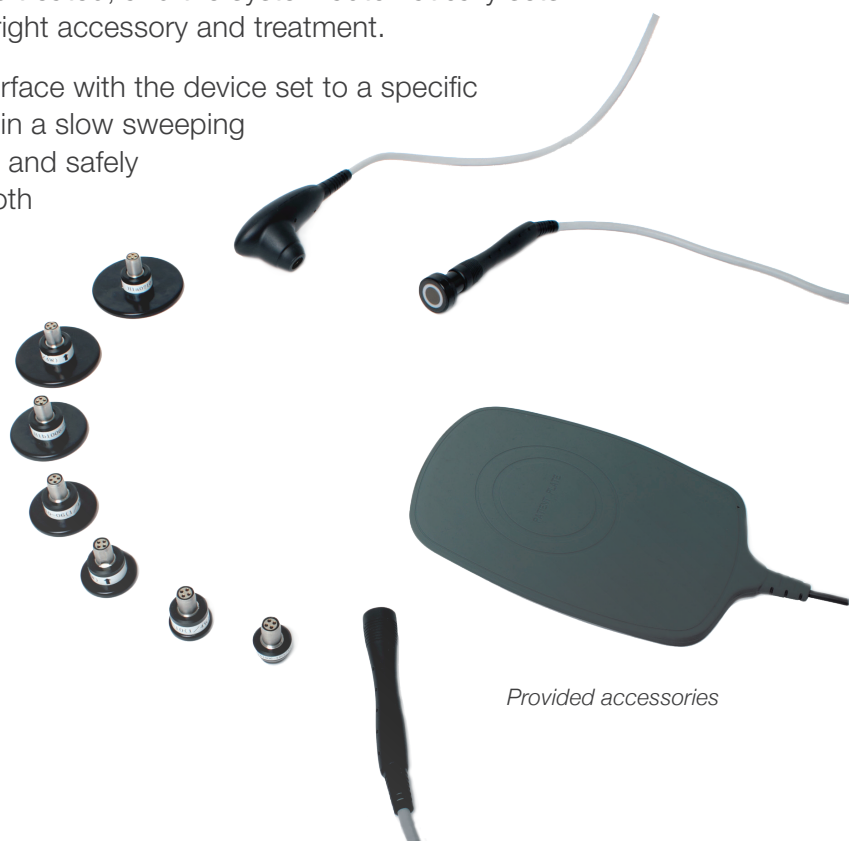
Precision perfect: How NuEra *tight* works

NuEra *tight* is user-friendly: It features an automatic configuration graphic interface for maximum treatment versatility.

Simply select the area of the body or face to be treated, and the system automatically sets the correct parameters, and then displays the right accessory and treatment.

Apply the NuEra *tight* electrode to the skin's surface with the device set to a specific target temperature. Gently move the electrode in a slow sweeping or circular fashion so that it gradually, uniformly and safely heats up the skin's surface. The treatment is both comfortable to give, and pleasant to receive.

As the skin's temperature rises to the target temperature, the RF output automatically adjusts for precise heating, thanks to the APIC technology. Treatment is fast and efficient, taking around 10-15 minutes to treat facial areas and around 20-25 minutes to treat body areas.



Provided accessories



Put your patient's future in your hands

Thanks to its remarkable 250W power, NuEra *tight* uniquely works with one resistive bipolar handpiece and two monopolar handpieces with Coated Capacitive Energy Transfer (CCET) electrodes in a wide variety of capacitor head sizes - from small to very large. The system treats all areas quickly, safely and efficiently, providing natural looking and smooth results.

Patients can look forward to no downtime following an initial course of treatments aimed at achieving their goals. Afterwards, the smoothing effect is easy to maintain with touch-up treatments. This maintenance approach to NuEra treatments keeps patients coming back to your practice and offers a smooth appearance that lasts.

NuEra *tight* offers a new, 2-step approach to smoothing:



Step 1. GetSmooth

Jump-start with an initial treatment package designed to meet your patient's goals.



Step 2. StaySmooth

Maintain results with a regular treatment touch-up program that keep patients coming back throughout the year.

All over perfect with natural looking results



Before



After



Before



After



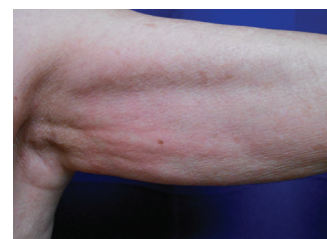
Before



After



Before



After

Courtesy of Concita Muneratti, MD - Italy

Courtesy of Connie Casad, MD - Dalas, TX

Your journey with NuEra *tight* has just begun.

We want your business to grow with NuEra *tight*. That's why we have put together a support package that begins with the first conversation and will stay with you as your business begins to see the benefits. We provide a support package which ensures that you have all the training you need and receive the most up to date clinical materials.



Lumenis Practice Locator

Thousands of patients search for treatment providers every month. Help them find your clinic by registering your practice on the Lumenis Practice Locator. We run campaigns through influencers, social media and viral videos to promote this directory.



Lumenis.com

Consumers have many questions about aesthetic and women's health treatments. Our dedicated patient-facing website will give them the re-assurance and confidence they need to move forward with the treatments.



Team Training

We install the system and train your staff, so that we are able to assess skin types and conditions, creating the perfect treatment plan for each individual patient. Our expert clinical training means they will handle consultations and treatments with confidence.



Your Most Valuable Resource

Your dedicated representative is an email, text, or phone call away. We want you to feel part of the Lumenis family, so please feel free to contact us any time. We'll always do our best to get back to you within 24 hours.



Brand Your Clinic

As a Lumenis client you will have access to the Lumenis Physician Portal. Here, you can find materials such as brochures and posters. As well as gain access to a wealth of clinical and product information.



Best Practice Marketing

Your individual Lumenis representative will be able to share marketing plans which you can tailor to your own business. These range from 90 day benchmarks for success to loyalty programs and promotions.

Specifications

Emission Frequency	470 kHz \pm 10%
Output Energy	250 W Max
Display LCD Touch Screen	10.4"
Coupling System	Capacitive
Operative Mode	Automatic & Manual
Impedance measurement	Automatic
Temperature Control	Automatic
Temperature Adjustment	37° \div 45° \pm 1°C
Timer	Max 60 min adj.
Feeding	220 VAC – 50 Hz
Dimensions	68x61x117 cm (WxDxH)
Weight	15Kg
Safety Class	Class1 - Type BF
Standard accessories	
Handpieces	2x monopolar face and body and 1x bipolar
Return Electrodes	1x handpiece and 1x plate
Isolated electrodes with temperature sensor (CCET)	8: \varnothing 20, \varnothing 30, \varnothing 40, \varnothing 60, \varnothing 70, \varnothing 80, \varnothing 100mm and Massage
Cosmetics	NuEra RF cream



"With a significant percentage of adult women being affected by some grade of cellulite, this fast, comfortable, non-invasive treatment provides my patients with the desired improved appearance, while ensuring safety thanks to the APIC temperature-control technology."

Edward M. Zimmerman MD, Nevada, US

Warnings and Risks: NuEra is unsuitable for anyone who is pregnant, has an infection or illness, or is heat-sensitive. Treatment over cuts, wounds, piercings and tattoos must be avoided and areas with injectable fillers and toxins left for a month before treatment. Patients with a metal implant or implanted device (e.g pacemaker) must consult with a qualified physician first. If deemed suitable, the return pad must be placed far away from the implant. Local, oral or systemic anesthetics cannot be used before or during treatment as patients need to provide regular feedback to ensure their continued comfort. Insulate patients from metal objects, especially any in direct contact (e.g. the bed). A full practitioner consultation is always advisable; for contraindications and risks in full, see the NuEra user manual.

Bios S.r.l.s.u.
Via Guido Rossa
10/12 - 20090
Vimodrone (MI) - Italy
T +39 02 27304275
F +39 02 27304276
info@biosgroup.eu
www.biosgroup.eu

Lumenis (Germany) GmbH
Heinrich-Hertz-Str 3 D-63303
Dreieich-Dreieichenhain
GERMANY
Tel: +49 (0) 6103 8335 0

EMEA
Dreieich-Dreieichenhain,
Germany
T +49 6103 8335 0
F +49 6103 8335 300

Roma, Italy
T +39 06 90 75 230
F +39 06 90 75 269

Hertfordshire, UK
T +44 20 8736 4110
F +44 20 8736 4119

JAPAN
Tokyo, Japan
T +81 3 6743 8300
F +81 3 6743 8301

AMERICAS
San Jose, CA, USA
T +1 408 764 3000
+1 877 586 3647
F +1 408 764 3999

ASIA PACIFIC
Beijing, China
T +86 10 5737 6677
F +86 10 5737 6767
Gurgaon, India
T +91 124 422 07 95
Kowloon, Hong Kong
T +852 217 428 00
F +852 272 251 51



FDA Cleared

© LUMENIS LTD 2018

For more information: www.lumenis.com



AESTHETIC.LUMENIS.COM

PB-2010621 Rev A

משווק בלעדית ע"י אלפאמדיקס בע"מ
רח' בזל 25, ת.ד. 10256, פ"ת 4900202, טל': 03-7589090
www.alphamedix.co.il

