



SlimME™

GENERAL SPECIFICATIONS		
Electrical Requirements	100 - 240 VAC	
Dimensions (W x D x H)	44 cm X 49.8 cm X 123.2 cm	
Weight	50 kg	
Maximal Vacuum Level	Up to 24 inHg	
TECHNICAL SPECIFICATIONS		
Ultrasound		
Handpiece	Hexagonal	Rectangular
US Frequency	2.25 MHz +/- 10%	
Maximum Acoustic Power per unit	12W	30W
Effective Exposure Area	2 cm ²	5.8 cm ²
Treatment Volume	7 cm ³	40 cm ³
RF		
RF Type	bipolar	
RF Frequency	1 MHz +/- 10%	
Maximal Operating RF Electrical Power	40 W	



Lumenis (Germany) GmbH
Heinrich-Hertz-Str 3 D-63303
Dreieich GERMANY
T +49 (0) 6103 8335 0



© 2015 All Rights Reserved.
The Lumenis Group of Companies.
PB-2004690 rev C



AMERICAS
San Jose, CA, USA
T +1 408 764 3000
+1 877 586 3647
F +1 408 764 3999

EMEA
Dreieich, Germany
T +49 6103 8335 0
F +49 6103 8335 300

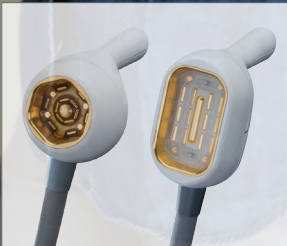
Rome (RM), Italy
T +39 06 90 75 230
F +39 06 90 75 269
Hertfordshire, UK
T +44 20 8736 4110
F +44 20 8736 4119

JAPAN
Tokyo, Japan
T +81 3 4431 8300
F +81 3 4431 8301

ASIA / PACIFIC
Beijing, China
T +86 10 5737 6677
Gurgaon, India
T +91 124 422 07 95
Kowloon, Hong Kong
T +852 217 428 00
F +852 272 251 51



WWW.LUMENIS.COM/AESTHETIC



SlimME™

Treat to fit





The SlimME™ system is based on tissue heating achieved by the synergy of Uniform Ultrasound and Radio-Frequency and followed by lymphatic drainage massage all in one applicator.

The SlimME™ system is intended for cosmetic and aesthetic contouring and body shaping.

The development of SlimME™, based on extensive research, led to a safe and extremely efficient procedure, encompassing the following advantages:

1. Selective thermal fat cell destruction
2. Ultra-fast procedure
3. Long term results
4. Customer satisfaction



Uniform Ultrasound

Unified exposure – homogeneous coverage, better outcome

Parallel exposure – no risk over unwanted areas, safer than other ultrasound modalities

Volumetric heating – increased treatment volume, heats faster

Multipolar RF

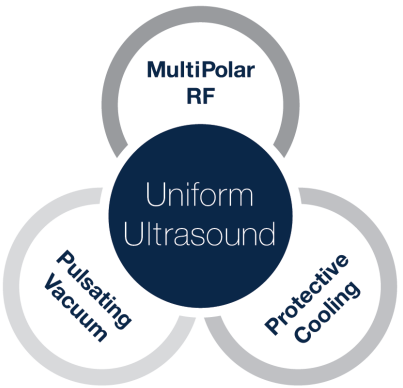
Multi-element bi-polar
RF improves skin laxity

Pulsating Vacuum

For the promotion of
lymphatic drainage
for better results

Protective Cooling

For the prevention of
epidermal damage
and the optimization
of comfort

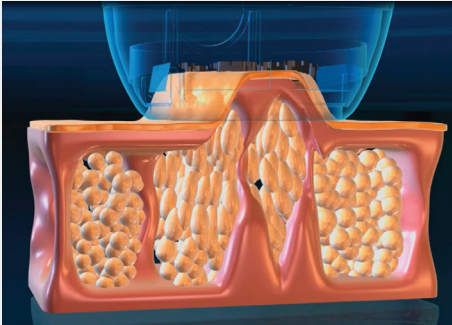


Treat to fit with SlimME

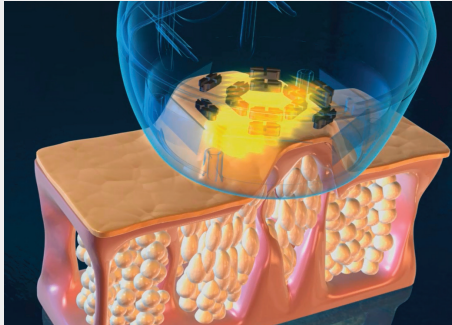
A typical SlimME procedure begins with the measurement of fat thickness in the desired area and marking of the SlimZone. Lumenis lotion is then applied to the procedure area. The ergonomically designed handpiece is placed over the first location and the session will be activated via a user-friendly intuitive interface.

The customer feels the vacuum increasing as the skin is drawn into the handpiece, together with continuous protective cooling. The Uniform Ultrasound will then begin leading to a warm sensation. The Ultrasound is followed by an additional emission of Radio Frequency.

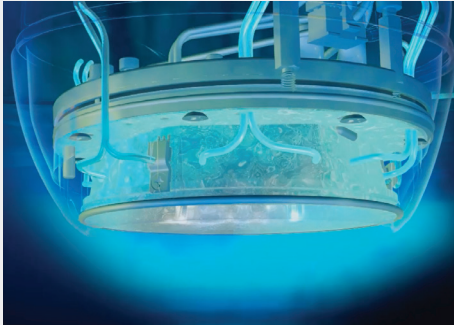
This cycle will be accompanied by a countdown timer that will automatically stop once completed. The procedure duration depends on the number of SlimZones.



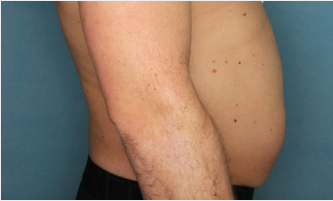
Vacuum



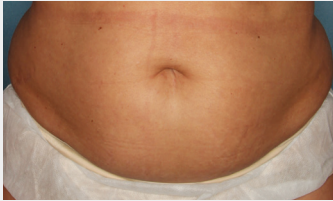
Ultrasound



Protective cooling



Male abdomen, before (left) and 3 months after a single session (right), a reduction of 5.5 cm.



Female abdomen, before (left) and 1 month after a single session (right), a reduction of 3.05 cm.