

A photograph of three healthcare professionals, two men and one woman, all wearing white lab coats and stethoscopes. They are gathered around a tablet computer, which is being held by the man in the center. The woman on the left is looking at the tablet with her hand on her chin, appearing thoughtful. The man on the right is holding a clipboard and looking down at the tablet. The man in the center is looking at the tablet with a focused expression. The background is a plain, light-colored wall.

Figure 1 displays six clinical photographs showing the results of laser hair removal on the upper arms and face. The images are arranged in three rows, each showing a 'Before' and 'After' comparison. The top row shows the upper arm, the middle row shows the face, and the bottom row shows the lower arm. In the 'Before' images, there is significant dark, coarse hair growth. In the 'After' images, the hair growth is significantly reduced, resulting in smoother skin.

Four months follow-up post
3 treatments

Adele Quintana, M.D.

Omar A. Ibrahimi, M.D., Ph.D.

Platform	LightSheer® DESIRE™ <i>light</i>	
Handpiece	XC	ET
Technical Specifications:		
Laser Type	AlGaAs Diode Arrays	AlGaAs Diode Arrays
Wavelength	805 nm (nominal)	805 nm (nominal)
Spot Size	12 mm X 12 mm	9 mm X 9 mm
Repetition Rate	Up to 3 Hz	Up to 3 Hz
Pulse repetition	1 Pulse	1 Pulse
Fluence	10-40 J/cm²	10-100 J/cm²
Pulse Width	5-400 ms	5-400 ms
Peak Power	1900 W	1600 W
Comfort Management	Chilltip contact cooling (5° C)	
Preset Parameters	Yes	
On-Site Service	Yes; replaceable handpiece	

Electrical	100-240 VAC, 12 A max. 50/60 Hz. Single-phase grounded outlet
Dimensions (WxDxH)	51 x 60 x 42 cm; (20.1 x 23.6 x 16.55 in)

It is indicated for the treatment of :vascular lesions (including angiomas, hemangiomas, telangiectasia and other benign vascular lesions), Pseudofolliculitis Barbae (PFB), Hair removal, permanent hair reduction*,benign pigmented lesions and leg veins.

Lumenis is a global leader in the field of minimally-invasive clinical solutions for the Surgical, Ophthalmology and Aesthetic markets, and is a world-renowned expert in developing and commercializing innovative energy-based technologies, including Laser, Intense Pulsed Light (IPL) and Radio-Frequency (RF). For nearly 50 years, Lumenis' ground-breaking products have redefined medical treatments and have set numerous technological and clinical gold-standards. Lumenis has successfully created solutions for previously untreatable conditions, as well as designed advanced technologies that have revolutionized existing treatment methods in each and every one of the verticals we operate in. Our drive for innovation stems from an uncompromising commitment to improving the health and well-being of our patients; addressing new and growing needs of aging populations; and in offering medical professionals cutting-edge solutions that fit seamlessly into the health-economics environment of the 21st century. The world over, we bring Energy to Healthcare.



San Jose, CA, USA
T +1 408 764 3000
+1 877 586 3647
F +1 408 764 3999

Dreieich Dreieichenhain,
Germany
T +49 6103 8335 0
F +49 6103 8335 300

Roma (RM), Italy
T +39 06 90 75 230
F +39 06 90 75 269

Hertfordshire, UK
T +44 20 8736 4110
F +44 20 8736 4119

Tokyo, Japan
T +81 3 6743 8300
F +81 3 6743 8301

Beijing, China
T + 86 10 5737 6677
Gurgaon, India
T + 91 124 422 07 99
Kowloon, Hong Kong
T + 852 217 428 00
F + 852 272 251 51



PB-2002616 REV A



LUMENIS.COM/AESTHETIC



LUMENIS.COM/AESTHETIC

LUMENIS AESTHETIC

Grow your Business with Desire

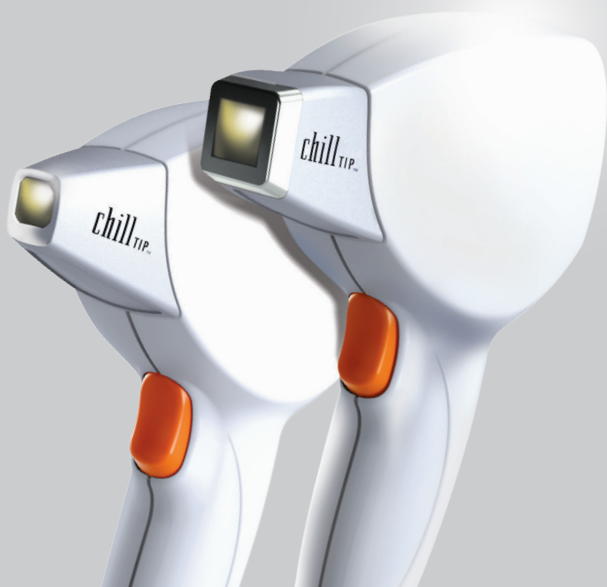


Gold Standard Diode Laser

2 Handpieces

Advanced ChillTip™ Technology

Technology Behind the Desire



How it Works



More and more people desire to have permanent hair reduction. They want a treatment that is **effective, fast and comfortable**.
To meet these needs, Lumenis, a leader in laser and energy based technologies, developed the LightSheer DESIRE so you can:

Benefit from a rapid return on investment

Increase your patient satisfaction

Grow your business

In order to provide you with optimal treatment possibilities, the portable LightSheer DESIRE comes with:

- The "Gold standard" 805nm diode laser
- 2 handpieces with various spot sizes
- Advanced technology

The unique features of the LightSheer DESIRE *light* enable you to provide your patients with:

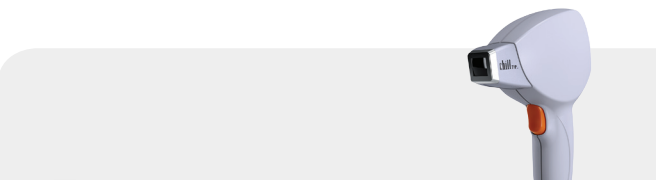
- Maximal treatment comfort
- Optimal results
- Suitable for a variety of skin types

Cutting Edge Technology

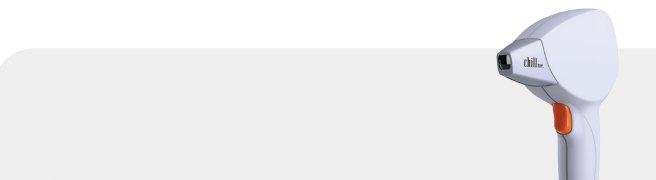
To deliver unsurpassed clinical results, the LightSheer DESIRE uses the industry's 'Gold Standard' 805 nm diode laser empowered by advanced ChillTip™ Technology.

2 optional handpieces for different area coverage: 9X9 or 12X12

To effectively treat all body areas the LightSheer DESIRE is equipped with handpieces that can be easily switched.



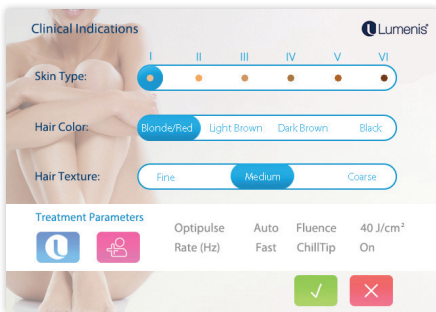
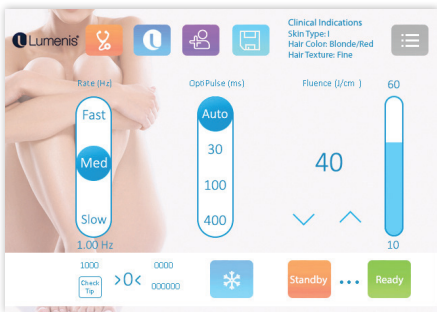
The **XC** has a Sapphire ChillTip spot size of 12x12mm, providing optimal solution for large and small areas.



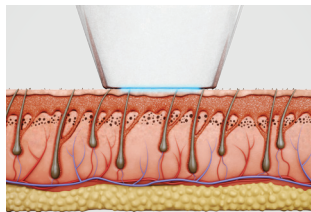
The **ET** has a Sapphire ChillTip spot size of 9x9mm designed to treat small areas that require maximum precision and high fluence.

Advanced Graphical User Interface

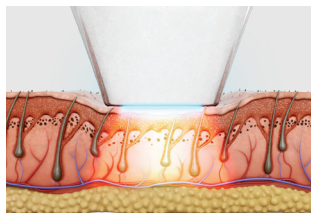
Intuitive presets for fast learning curve and easy treatment delegation.



How ChillTip™ Works



1. Skin is cooled before and during treatment.



2. Skin is compressed. Laser beam applied to skin and target is affected.

Advantages of ChillTip™ Technology

Enhanced Safety

Superior epidermal protection is achieved through ChillTip contact cooling.

Increased Comfort

By continuously cooling the skin, pain and discomfort are significantly reduced.

Higher Efficacy

Compression of the skin rotates follicle closer to the surface, blanches blood vessels and reduces competing chromophores. High fluence enables treatment of areas requiring precision and thin, light hair.