

# LIFT & CONTOUR

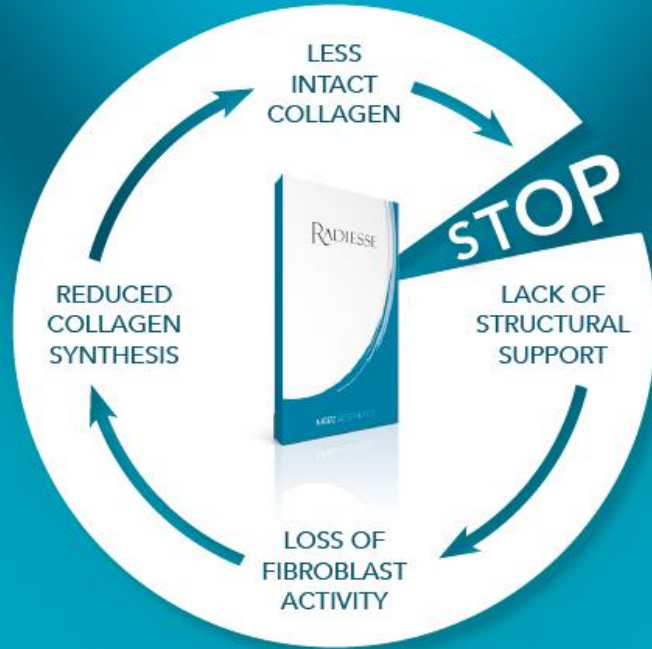
with long-term collagen stimulation



MERZ AESTHETICS

**RADIESSE**<sup>®</sup>  
The Lifting Filler

# RADIESSE® BREAKS THE CYCLE OF STRUCTURAL LOSS



Collagen is essential for a healthy and youthful appearance

The degeneration of collagen fibres in the ageing skin initiates a vicious cycle of reduced cellular activity, diminished cellular renewal, and decreased protein synthesis.<sup>1</sup> Radiesse® acts against loss of structure by providing an intradermal scaffold which functions as a mechanical stimulus for fibroblast activation and collagen neogenesis.<sup>2-4</sup>

<sup>1</sup> Fisher GJ, et al. Arch Dermatol. 2008; 144: 666-72.  
<sup>2</sup> Mirmur ES, et al. J Cosmet Laser Ther. 2004; 6: 223-226.  
<sup>3</sup> Berlin AL, et al. Dermatol Surg. 2008; 34: 564-567.  
<sup>4</sup> Yustovskaya Y, et al. J Drugs Dermatol. 2014;13(9):1047-1052.

## TRIPLE EFFECT

with long-term collagen stimulation



1

### ✓ Versatile Filling

Safe, effective, and easy reduction of moderate to deep lines

2

### ✓ Volume Lifting

Lifting and contouring with collagen-induced volume enhancement

3

### Skin RejuVenation

Long-term improvement of skin quality

RADIESSE®

# RADIESSE®: MODE OF ACTION

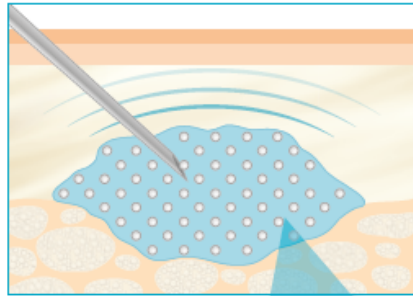
## Versatile Filling

## Volume Lifting & Contouring

## Skin Rejuvenation



### Immediate 1:1 correction

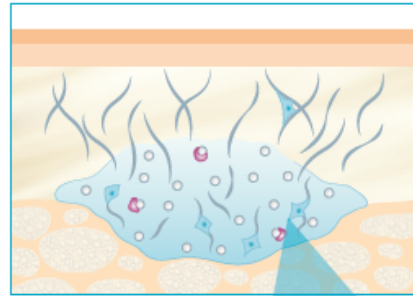


#### 1. Effect

Gel-matrix with CaHA-microspheres results in effective wrinkle filling and 1:1 correction.



### Stimulation of collagen neogenesis

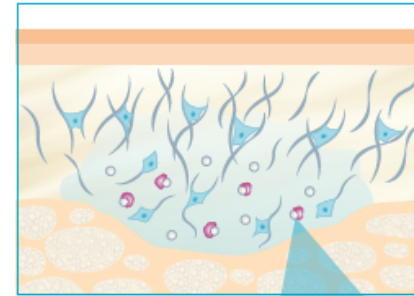


#### 2. Effect

CaHA-microspheres form a "scaffold" that provides mechanical stimuli triggering fibroblasts into producing collagen.



### Tight collagen network strengthens the dermis

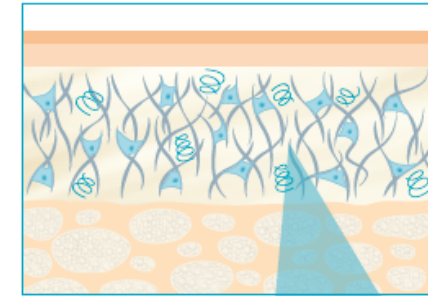


#### Collagen net

A firm network of collagen fibres has formed in the dermis, providing a lifting and contouring effect.

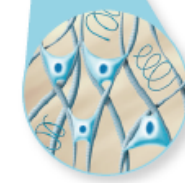


### High density of collagen and elastin



#### 3. Effect

The newly formed network provides long-term structural support of the dermal microenvironment.



## RADIESSE®: EXCELLENT RHEOLOGICAL PROPERTIES<sup>5</sup>

- High elasticity (G') of Radiesse® injectable implant confers the advantage of resistance to applied forces, e.g. from facial musculature and gravity, for extra stable results.
- High viscosity ( $\eta^*$ ) of Radiesse® injectable implant confers the advantage that the filler will tend to remain at the injection site and guarantees excellent modelling qualities.

## SAFE AND NATURAL LOOKING RESULTS<sup>2</sup>

Radiesse® is a non-permanent filler that is highly biocompatible and fully biodegradable. Following injection, the CaHA-microspheres are completely metabolised by macrophages. After several weeks, only the newly formed collagen network remains – for an all-natural look and feel.



Note: This mode of action has been compiled on basis of following publications:  
Marmur ES, et al. J Cosmet Laser Ther. 2004; 6: 223-226; Berlin AL, et al. Dermatol Surg. 2008; 34: 564-567; Yutskovskaya Y, et al. J Drugs Dermatol. 2014;13(9):1047-1052.  
Sundaram H, et al. Dermatol Surg. 2010 Nov; 36 Suppl 3: 1859-1865.

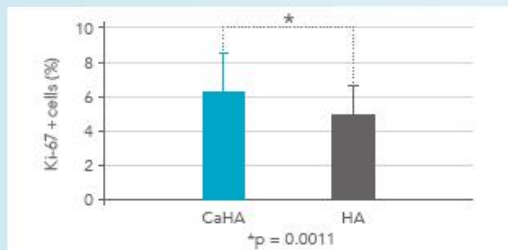
<sup>2</sup> Marmur ES, et al. J Cosmet Laser Ther. 2004; 6: 223-226.

# EFFECTIVE SKIN REJUVENATION

Improving skin quality on 4 essential levels

## Activating cell proliferation

In addition to the immediate filling effect, treatment with Radiesse® mechanically stimulates proliferation of dermal cells. Compared to cross-linked HA, cutaneous proliferation is significantly higher following CaHA injection.<sup>4</sup>

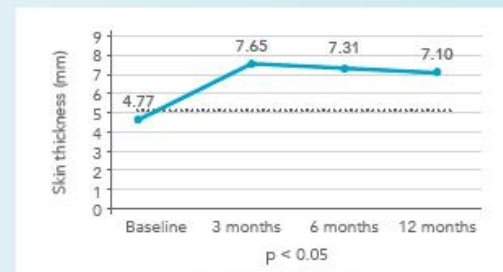


FIBROBLASTS

SKIN THICKNESS

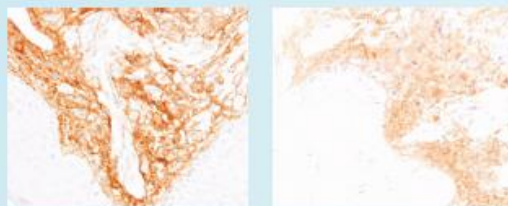
## Increasing skin thickness

As early as 3 months following a first treatment with Radiesse®, skin thickness has increased by more than 50% compared to baseline.<sup>6</sup>



## Stimulating collagen

Injection of CaHA-microspheres effectively stimulates collagen neogenesis by mechanical action. Within 9 months, a single injection of Radiesse® leads to a noticeably denser network of newly formed collagen type I compared to HA.<sup>4</sup>



Radiesse®

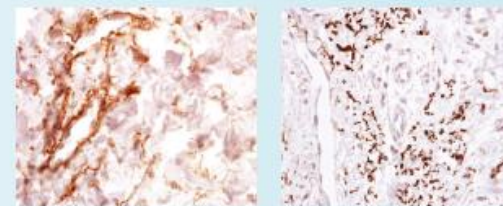
cross-linked HA<sup>4</sup>

COLLAGEN

ELASTIN

## Building more elastin

Radiesse® treatment markedly increases the skin's elastin contents. In comparison to HA, administration of Radiesse® results in a significantly higher proportion of intact elastin at 9 months following injection.<sup>4</sup>



Radiesse®

cross-linked HA<sup>4</sup>

<sup>4</sup> Yutskovskaya Y, et al. J Drugs Dermatol. 2014;13(9):1047-1052.  
<sup>6</sup> Silvers SL, et al. Plast Reconstr Surg. 2006; 118 (Suppl. 3): 345-455.  
<sup>4</sup> JUVÉDERM VOLUMA™.

RADIESSE®

RADIESSE®

More than  
**190 clinical studies**  
and scientific publications<sup>7</sup>

Clinical data on more than  
**4,000 patients**<sup>7</sup>

FDA approved  
since 2006

Trusted  
worldwide with  
more than  
**5 million syringes**  
shipped

Radiesse®  
dermal filler  
**is one of the  
safest**  
dermal fillers  
available<sup>8</sup>

**90%**  
patient satisfaction  
after  
**12 months**<sup>9</sup>

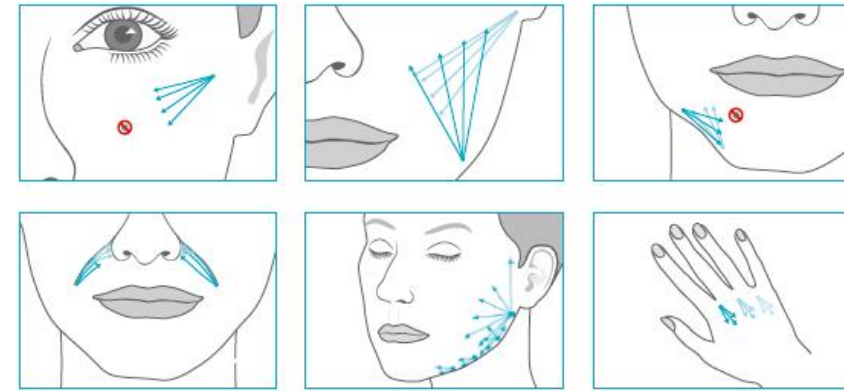
**Excellent  
tolerability  
and safety**  
clinically proven<sup>10</sup>

## INJECTION TECHNIQUES

Volume enhancement and full facial lifting

### Effective treatment options

Treating the key areas of the face with Radiesse® can lead to excellent lifting effects. Re-volumising key areas (most commonly cheeks, jawline, and chin) can result in a synergistic effect which restores the harmony of upper, mid, and lower face. Especially the re-filling of deeper planes of the midface exerts a vital lifting effect on the lower face and helps to correct deeper nasolabial folds.<sup>11</sup> Moreover, Radiesse® may be used to correct excessive volume deficits that occur due to HIV-associated facial lipatrophy or age-related volume loss of the hands.

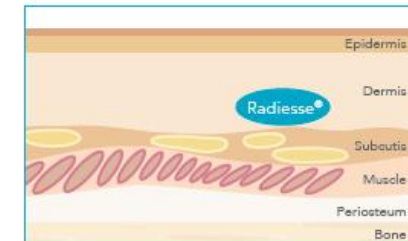


### Deep injection

The injection is positioned into the deep or subdermal tissue layer, near the subcutaneous structure.

### Good modelling possibility

The cohesive gel-matrix is easy to shape and simple to model.



<sup>7</sup> Data on request.

<sup>8</sup> Mariano Basso, MD, Dermatologist, Miami, Florida; Chief of Dermatology at Mercy Hospital, Miami, Assistant Clinical Professor, University of Miami, Miami.

<sup>9</sup> Moers-Carpel M, et al. Dermatol Surg. 2007 Dec; 33 Suppl 2: S144-51.

<sup>10</sup> Bae LS, et al. Aesthetics Surgery Journal. 2010; 30: 235.

© Cave: Do not inject Radiesse® in these areas

<sup>11</sup> Miles Granvier (Plastic Surgeon); The Aesthetic Guide, Clinical Roundtable Supplement: July/August 2013.

**RADIESSE®**

# CONVINCING RESULTS

## Treatment of deep nasolabial folds

Deep nasolabial folds give the face a tired and aged expression. In this patient, a single treatment with Radiesse® led to a pronounced correction. Following a touch-up 4 months after the initial injection, Radiesse® treatment effects were visible for more than 1 year.



Before



After

## Contouring the jawline

Jawline contouring gains increasing relevance in the aesthetic practice. Radiesse® can be used to shape and re-define drooping jawlines and jowls.



Before



After

## Full facial lifting

There is an increasing demand for full facial lifting among patients. In this patient, mid-face cheekbones, cheeks, and mental crease were treated simultaneously with very satisfactory results.



Before



After

## Improvement of skin quality

A strong lifting and rejuvenating effect was achieved by using Radiesse® on mid-face, cheeks, marionette lines, pre-jowl sulci, and mental crease.



Before



After

RADIESSE®

RADIESSE®



## LIFT & CONTOUR

with long-term collagen stimulation

Radiesse®

Gel-matrix	Easy to inject with immediate effect
CaHA-microspheres	Fibroblast activator and collagen creation enhancer
Triple effect	Versatile filling, volume lifting & contouring, and skin rejuvenation
Long-term effectiveness	12 months or longer in most patients
Safety	Numerous studies confirm the excellent safety profile

For further information on Radiesse®, please see the Instructions For Use.